

Kingspan KS1000 AWP/LS Firewall 90 Solution



- Optimum levels of fireproofing and thermal performance
- Elegant aesthetic solution
- Choice of materials
- Full technical support

Case Study

Publication date January 2009



FIREsafe[™]

ECOsafe

FIBREfree

AQUAsafe

*Constructive
Thinking*



Kingspan[®]

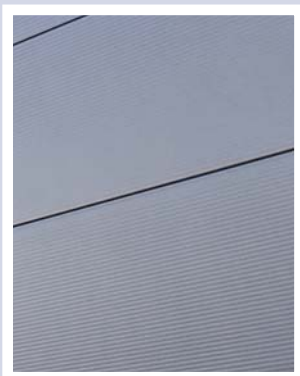
Insulated Panels

Engineers and Architects Welcome Elegant Firewall Solution for Boundary Walls

Kingspan Launch of Kingspan KS1000 AWP/LS Firewall 90 Solution

Engineers and architects are celebrating the introduction to the Australian market of the internationally developed and accredited, Kingspan KS1000 AWP/LS Firewall 90 Solution.

The elegant new design of this product successfully addresses the significant challenges faced by fire engineers required to assess building design and choice of materials with a fire performance solution designed to work seamlessly across the Architectural and Longspan Wall Panel ranges. A masterstroke by Kingspan, it works in tandem with their standard KS 1000 AWP / LS range of insulated panels. This has extended the potential applications of the standard Kingspan KS1000 AWP / LS range of insulated panels and from an architectural perspective, provides an elegant aesthetic solution for external boundary and internal walls.



From a performance perspective the system ensures optimum levels of fireproofing and thermal performance while offering more choice in material selection at the early design stages of a building. The system provides a 90 minute Fire Resistance Level of (-/90/90) meeting the BCA requirements for fire resistance levels in building classes from Type A to C.

Kingspan's state of the art manufacturing plant in Australia is headquartered in Sydney and manufactures locally insulated panels for architectural roofing and walls, as well as cold storage solutions. The company distribute nationally and offer full technical support and advice to their clients. The company is an industry leader committed to sustainable building solutions with a research and development facility that ensures the constant refinement and development of new insulation building solutions.

Kingspan reserve the right to amend product specifications without prior notice. The information, technical details and fixings advice are given in good faith but are intended as a guide only. For further information please contact Kingspan Insulated Panels.

For more details contact Kingspan:
Kingspan Insulated Panels Pty Limited
Tel 02 9673 5069 **Fax** 02 9673 5068
Email info@kingspanpanels.com.au
www.kingspan.com.au