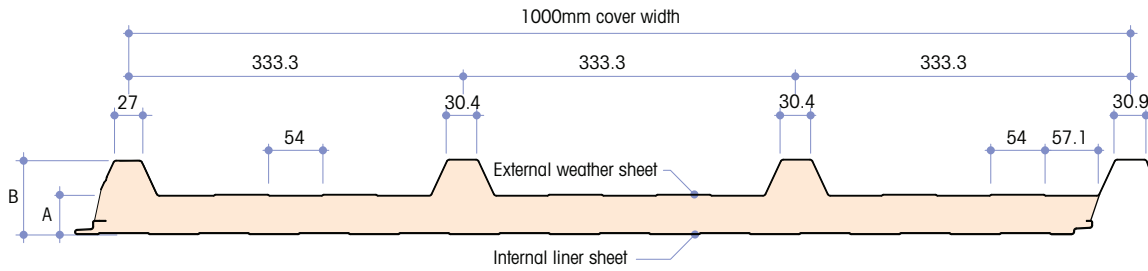
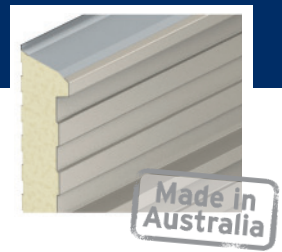


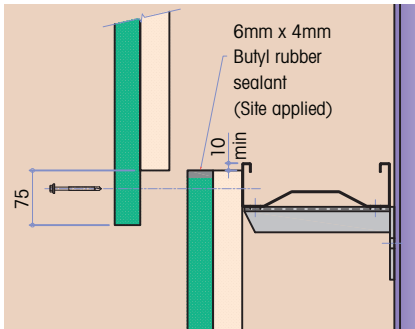
Insulated trapezoidal wall panel system - KS1000 RW



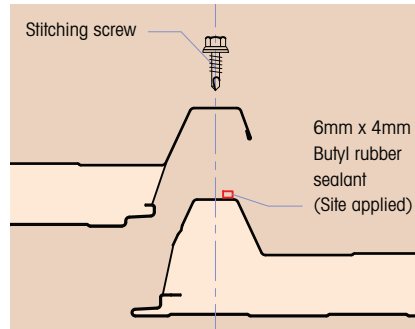
A - Core thickness (mm)	30*	40	60	100
B - Overall dimensions (mm)	65	75	95	135
R-Value (m ² K/W)	1.83	2.35	3.37	5.36
Weight kg/m ² 0.5/0.4 steel	9.5	9.9	10.7	12.3

*30mm thickness can be used on the wall to comply with Section J thermal regulations climate zones 1-7

KS1000 RW End Lap



KS1000 RW Side Lap



Deflection Ratio

Pressure = Span/100 Suction = Span/100

Unfactored Load/Span Table (Use calculated design windload values unfactored)

SPAN CONDITION	Panel Thickness (mm)	Load Type	Uniformly Distributed Loads (kPa)																
			Span L in Metres																
			2.0	2.2	2.4	2.6	2.8	3.0	3.2	3.4	3.6	3.8	4.0	4.2	4.4	4.6	4.8	5.0	
SINGLE SPAN Outer Sheet 0.5mm steel Inner Sheet 0.4mm steel	30	Pressure/ Suction	2.94	2.42	2.02	1.69	1.43	1.22	1.04	-	-	-	-	-	-	-	-	-	-
	40	Pressure/ Suction	3.46	2.93	2.50	2.14	1.85	1.60	1.39	1.22	1.07	-	-	-	-	-	-	-	-
	60	Pressure/ Suction	4.95	4.28	3.72	3.25	2.86	2.52	2.23	1.99	1.77	1.58	1.42	1.28	1.15	1.04	-	-	-
	100	Pressure/ Suction	9.39	8.22	7.24	6.41	5.70	5.09	4.56	4.10	3.69	3.34	3.02	2.75	2.50	2.28	2.08	1.91	-
DOUBLE SPAN Outer Sheet 0.5mm steel Inner Sheet 0.4mm steel	30	Pressure/ Suction	2.72	2.34	2.02	1.76	1.54	1.36	1.20	1.06	-	-	-	-	-	-	-	-	-
	40	Pressure/ Suction	2.91	2.54	2.23	1.98	1.76	1.57	1.41	1.27	1.15	1.04	-	-	-	-	-	-	-
	60	Pressure/ Suction	3.90	3.44	3.06	2.74	2.46	2.23	2.02	1.84	1.68	1.54	1.41	1.30	1.20	1.11	1.03	-	-
	100	Pressure/ Suction	7.17	6.36	5.69	5.13	4.64	4.22	3.86	3.54	3.25	3.00	2.78	2.57	2.39	2.22	2.07	1.93	-

For further technical information, please contact Kingspan Technical Services on 1300 799 594.